

Piezo Buzzers



B2PB Series

For your safety, read and follow the considerations written in the instruction manual, other manuals and Autonics website.

The specifications, dimensions, etc. are subject to change without notice for product improvement. Some models may be discontinued without notice.

Features

- Clear and loud sound : up to 98 ± 8 dB (at 0.1m)
- Select between continuous or intermittent sound settings
- Mounting hole : $\varnothing 22/25$ mm / Panel thickness: 6 mm

Safety Considerations

- Observe all 'Safety Considerations' for safe and proper operation to avoid hazards.
- ⚠ symbol indicates caution due to special circumstances in which hazards may occur.

⚠ Warning Failure to follow instructions may result in serious injury or death.

01. Fail-safe device must be installed when using the unit with machinery that may cause serious injury or substantial economic loss. (e.g. nuclear power control, medical equipment, ships, vehicles, railways, aircraft, combustion apparatus, safety equipment, crime/disaster prevention devices, etc.)

Failure to follow this instruction may result in personal injury, fire, or economic loss.

02. Do not use the unit in the place where flammable/explosive/corrosive gas, high humidity, direct sunlight, radiant heat, vibration, impact, or salinity may be present.

Failure to follow this instruction may result in fire or explosion.

03. Do not disassemble or modify the unit.

Failure to follow this instruction may result in electric shock or fire.

04. Check 'Connections' before wiring.

Failure to follow this instruction may result in electric shock or fire.

05. Do not use this unit close to ears.

Failure to follow this instruction may result in injury.

⚠ Caution Failure to follow instructions may result in injury or product damage.

01. Do not use the unit outdoors.

Failure to follow this instruction may result in shorten the life cycle of the unit

02. Use the unit within the rated specifications.

Failure to follow this instruction may result in fire or product damage.

03. When connecting the power input, use AWG 26-16 (0.30 to 1.25 mm²) cable and tighten the terminal screw with a tightening torque of 0.4 to 0.6 N.m.

Failure to follow this instruction may result in fire or malfunction due to contact failure.

04. Use dry cloth to clean the unit, and do not use water or organic solvent.

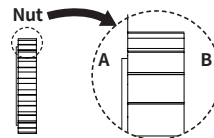
Failure to follow this instruction may result in electric shock or fire.

Cautions during Use

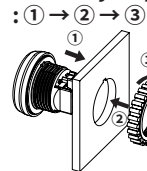
- Follow instructions in 'Cautions during Use'. Otherwise, It may cause unexpected accidents.
- 12 - 24 VDC= power supply should be insulated and limited voltage/current or Class 2, SELV power supply device.
- Do not use this unit at below places.
 - Place where there is severe vibration or impact
 - Place where strong alkalis or acids are used
 - Place where there are direct ray of the sun
 - Place where strong magnetic field or electric noise are generated
- This unit may be used in the following environments.
 - Indoors (in the environment condition rated in 'Specifications')
 - Altitude max. 2,000 m
 - Pollution degree 2
 - Installation Category II

Panel Mounting

When cutting a hole of the panel to $\varnothing 25$, the A side should be on the panel. When cutting a hole of the panel to $\varnothing 22$, the B side should be on the panel.



Assembly sequence



Specifications

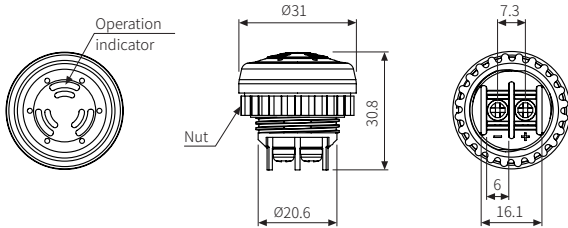
Model	B2PB-B1D	B2PB-B1D-R
Power supply	12-24 VDC \pm 10 %	
Power consumption	\leq 0.6 W	
Current consumption	\leq 25 mA	
Sound pressure	98 \pm 8 dB (distance: 0.1 m) ⁰¹⁾	
Sound frequency	\approx 2.5 kHz	
Sound type ⁰²⁾	Continuous sound, intermittent sound	
Mounting hole	\varnothing 22/25 mm compatible	
Operation indicator	Green	Red
Insulation resistance	\geq 1,000 M Ω (500 VDC \equiv megger)	
Dielectric strength	500 VAC \sim 50/60 Hz for 1 min (between all terminals and case)	
Vibration	0.75 mm amplitude at frequency of 10 to 55 Hz (for 1 min) in each X, Y, Z direction for 1 hour	
Vibration (malfunction)	0.75 mm amplitude at frequency of 10 to 55 Hz (for 1 min) in each X, Y, Z direction for 10 min	
Shock	500 m/s ² (\approx 50 G) in each X, Y, Z direction for 3 times	
Shock (malfunction)	147 m/s ² (\approx 15 G) in each X, Y, Z direction for 3 times	
Ambient temperature	-15 to 55 °C, storage: -25 to 65 °C (no freezing or condensation)	
Ambient humidity	35 to 85 %RH, storage: 35 to 85 %RH (no freezing or condensation)	
Protection structure	IP65 (front, IEC standard)	
Material	Cap: PC, Body: PA6 (G15%)	
Tightening torque	0.4 to 0.6 N m	
Approval	CE ENEC	
Unit weight (packaged)	\approx 18 g (\approx 305 g, 10 units)	

01) It is rated at power supply 24 VDC \equiv . (sound pressure may be decreased when using 12 VDC \equiv .)

02) Connect the power in the right direction: continuous sound (beep ---), Connect the power in the reverse direction: intermittent sound (beep-beep-)

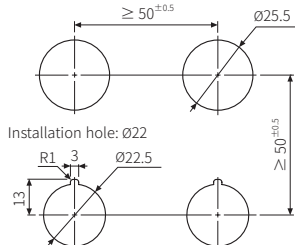
Dimensions

- Unit: mm, For the detailed drawings, follow the Autonics website.



Panel cut-out

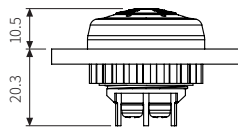
Installation hole: \varnothing 25



Installation hole: \varnothing 22

Panel mounting

- Panel thickness: \leq 4 mm

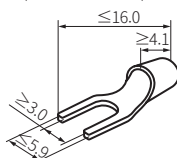


Connections and Operation Timing Chart

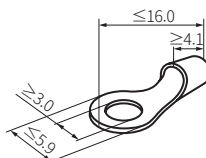
	Right direction power: continuous sound (beep ---)	Reverse direction power: intermittent sound (beep-beep-)
Connections		
Power supply	ON	ON
Buzzer sound	ON	ON
Operation indicator	ON	ON

Crimp Terminal Specifications

- Unit: mm, Use the crimp terminal of follow shape.
- AWG 22-16 (0.30 to 1.25 mm²)



Fork crimp terminal



Round crimp terminal